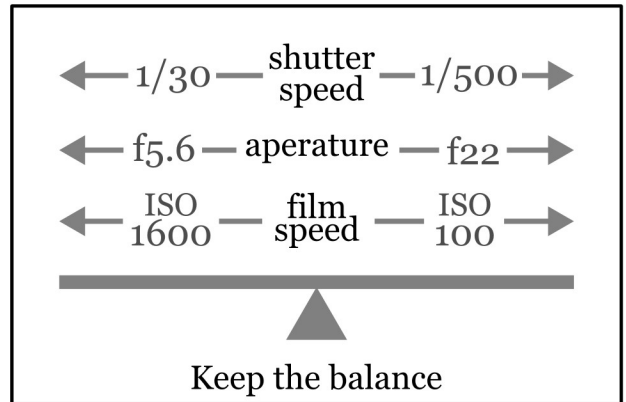
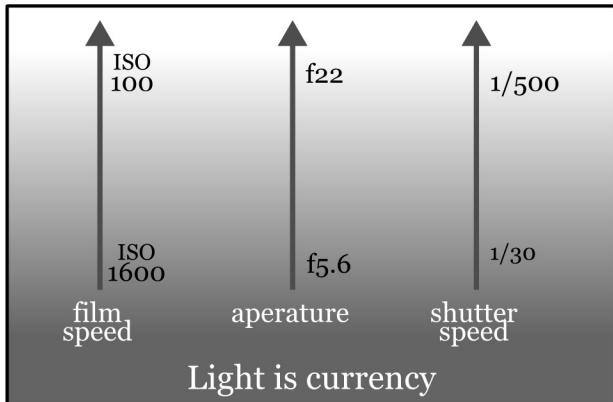
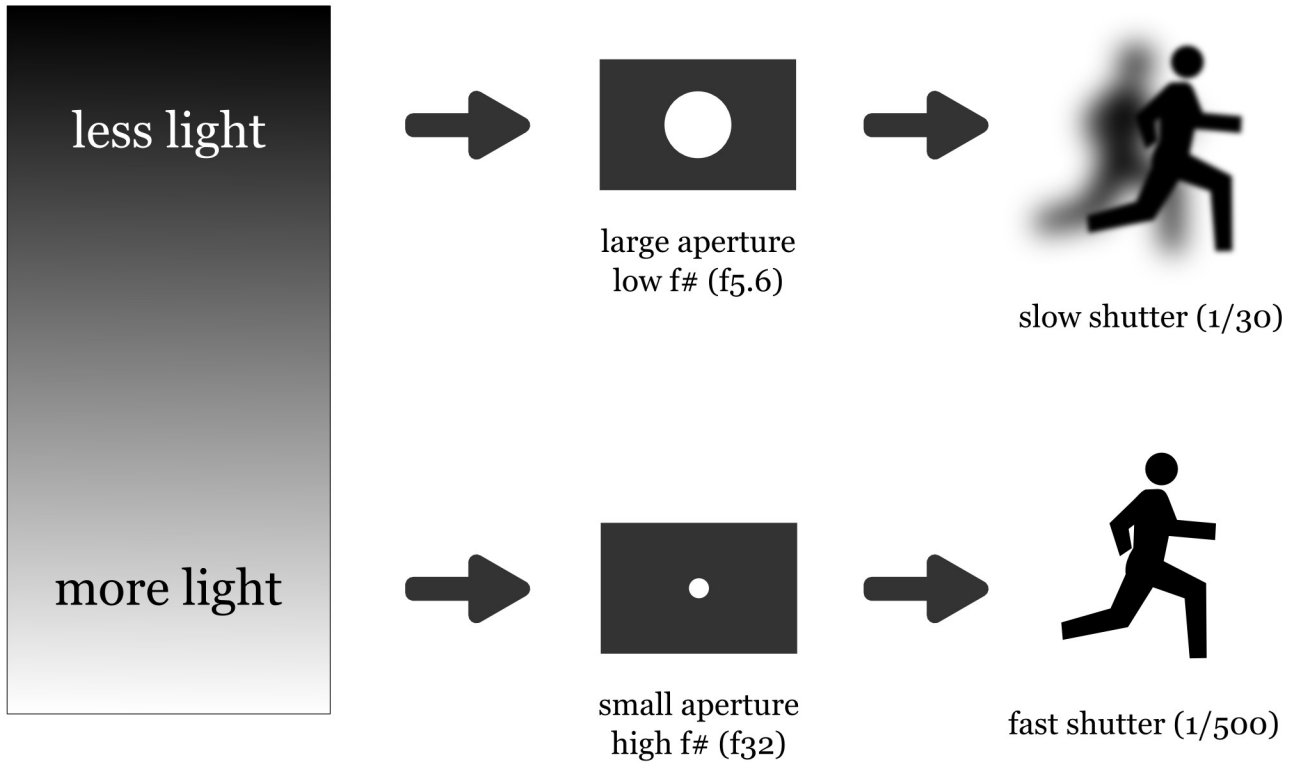


# How it all works together



# DOF = Depth Of Field

how much stuff is in focus



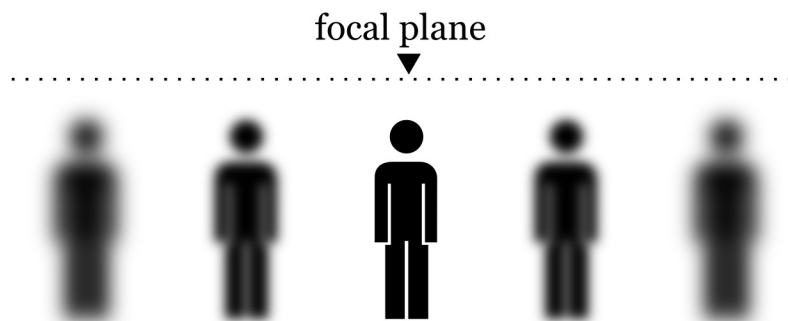
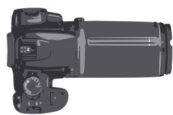
aperature is f32



aperature is f5.6

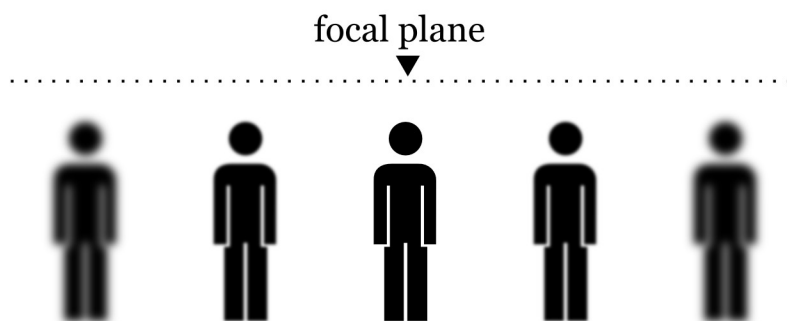
## shallow DOF

less in focus, long lens, low f#



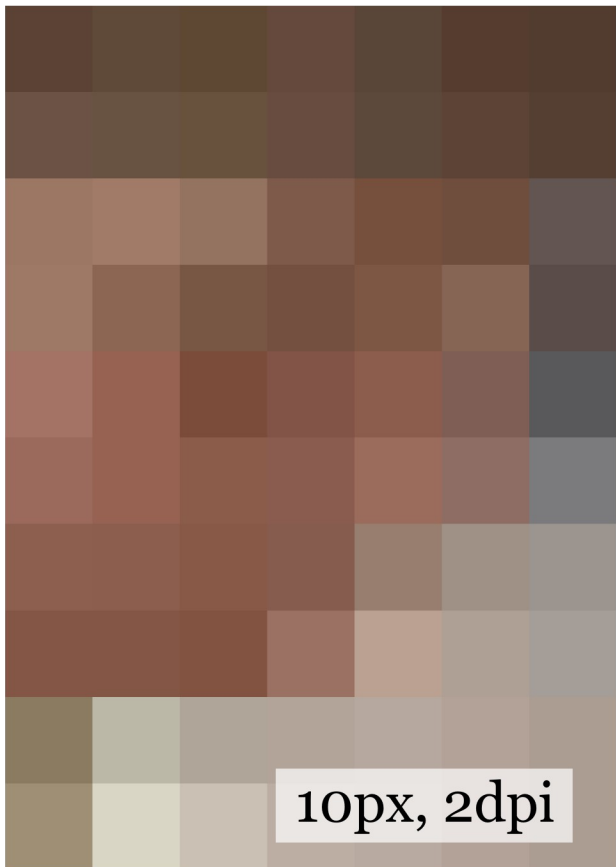
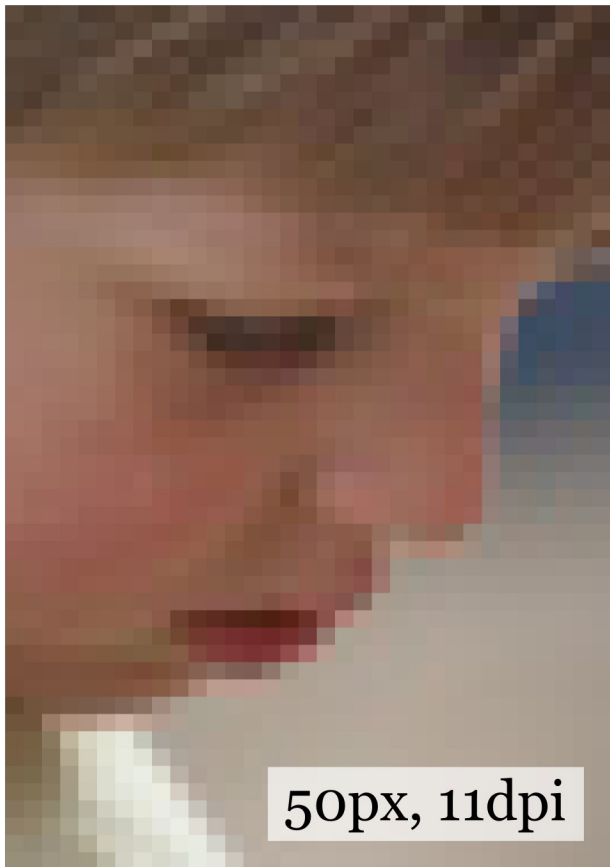
## deep DOF

more in focus, short lens, high f#



note: long lens also compresses space, and the short lens expands it

DPI and resolution  
all photos below are 4.5 inches (long side)



## **Links**

Gimp

[gimp.org](http://gimp.org)

Faststone image viewer

[faststone.org](http://faststone.org)

Google's image manager

[picasa.google.com](http://picasa.google.com)

My site

[andrewfrueh.com](http://andrewfrueh.com)

Flickr – photo sharing

[flickr.com](http://flickr.com)

The Flickr group for this class

[flickr.com/groups/623547@N24](http://flickr.com/groups/623547@N24)